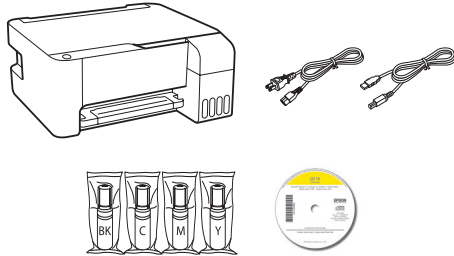


L3110 Start Here

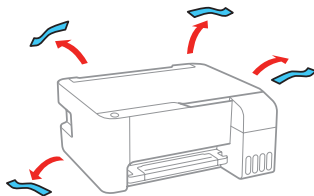
Read these instructions before using your product.

1 Unpack



Note: Do not open the ink bottles until you are ready to fill the ink tanks. The ink bottles are vacuum packed to maintain reliability.

Remove all protective materials from the product.



Note: Do not turn on the product yet.

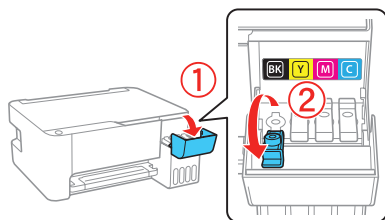
2 Fill ink tanks

Caution:

- This product requires careful handling of ink. If ink spills, wipe it off immediately with a damp towel to avoid permanent stains. If ink gets on your clothes or belongings, it may not come off.
- Epson cannot guarantee the quality or reliability of non-genuine ink. The use of non-genuine ink may cause damage that is not covered by Epson's warranty.

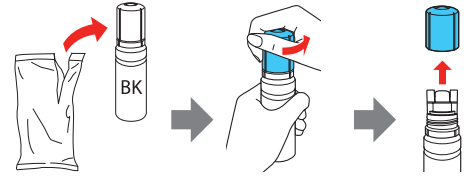
Warning: Keep the ink bottles out of the reach of children and do not drink the ink.

- 1 Open the ink tank cover and the cap for the black ink tank.



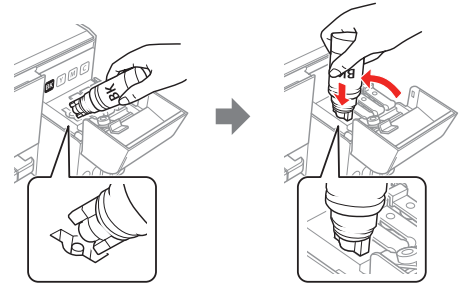
Note: Refer to the color-coded sticker on the ink tank unit to identify the color of each tank.

- 2 Unpack the black (BK) ink bottle. Hold the ink bottle upright and slowly turn the bottle cap to remove it.



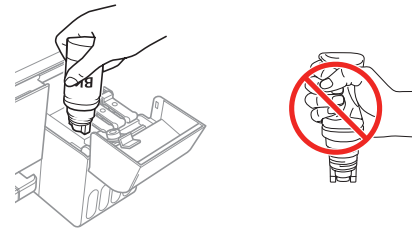
Caution: Do not shake or squeeze the ink bottles. Do not touch the top of the ink bottle after its cap is removed.

- 3 Position the top of the ink bottle along the front of the filling port, then slowly stand the bottle upright to insert it.

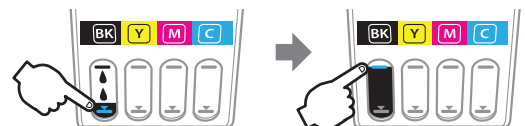


Note: Do not force the bottles into position; they are keyed for each color.

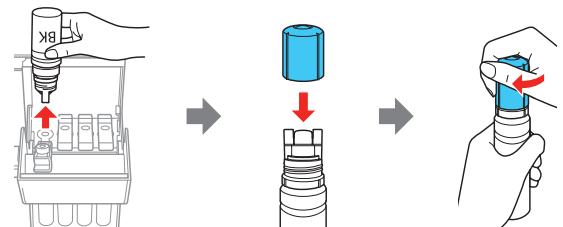
- 4 Wait for the ink to fill the tank. **Do not squeeze the bottle.**



Note: Ink flows into the tank and stops automatically when the ink tank is filled to the upper line. If ink does not flow from the bottle, lift and reinsert the bottle.



- 5 When the ink tank is full, remove the ink bottle and securely close it with the bottle cap.



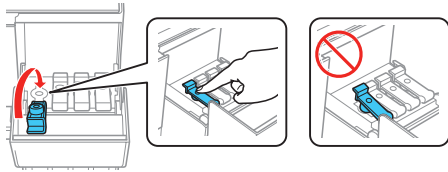
Note: Do not leave the ink bottle inserted; otherwise the bottle may be damaged or ink may leak. If any ink remains in the bottle, store the bottle upright for later use.



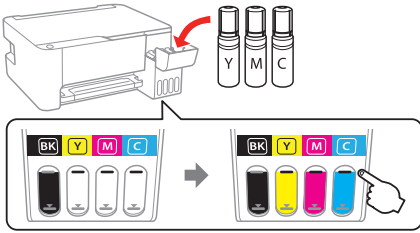
413609300

EPSON
EXCEED YOUR VISION

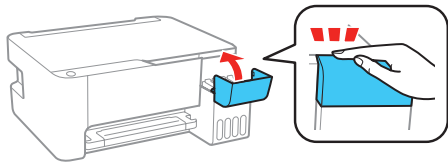
6 Close the black ink tank cap.



7 Repeat the previous steps for the other colors.

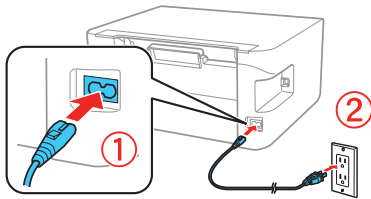


8 Close the ink tank cover.



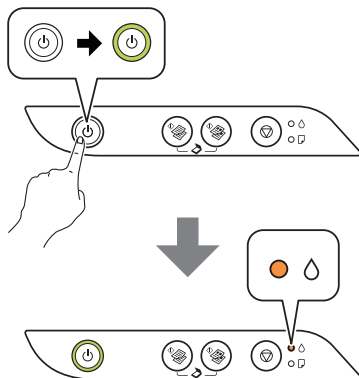
3 Turn on and charge the ink

1 Connect the power cord to the back of the product and to an electrical outlet.



Caution: Do not connect to your computer yet.

2 Press the power button to turn on the product, then wait for the ink light to stop flashing and stay on.



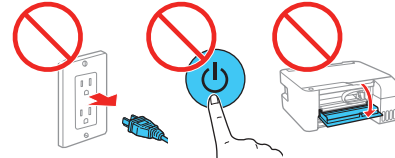
3 Press and hold the stop button for 5 seconds until the power light starts to blink and ink charging begins.



Note: Ink charging takes about 10 minutes. When the power light stops blinking, ink charging is complete.



Caution: Do not turn off the product, open the front cover, or load paper while the product is charging or you'll waste ink.

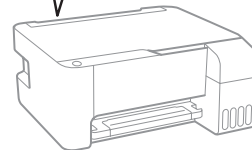
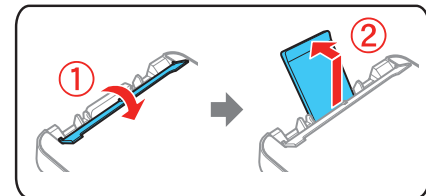


Note: Use the ink bottles included with the printer to set up the product. Part of the ink will be used to charge the print head. These bottles may print fewer pages compared with subsequent ink bottles.

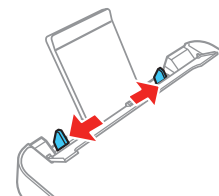
4 Load paper

See the online *User's Guide* for information about loading capacity and available paper types and sizes.

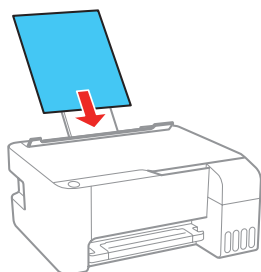
1 Make sure the product is not charging ink. Then flip the feeder guard forward, raise the paper support, and tilt it backwards slightly.



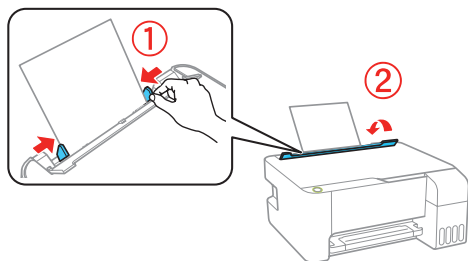
2 Slide the edge guides all the way out.



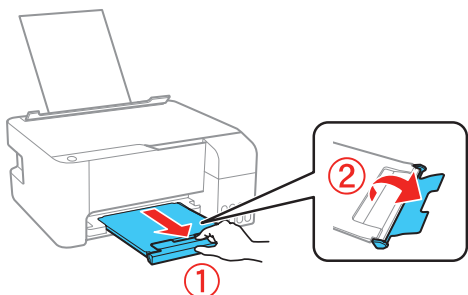
- 3** Load A4- or letter-size paper, glossy or printable side up and short edge first, in the middle of the rear paper feed slot.



- 4** Slide the edge guides against the paper, but not too tightly, then flip the rear feeder guard back.



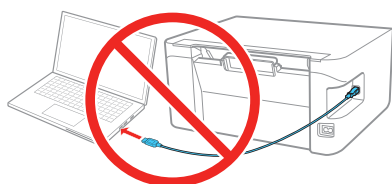
- 5** Pull out the output tray, then raise the paper stopper.



5 Install software

Note: If you are using a Mac or your computer does not have a CD/DVD drive, an Internet connection is required to obtain the product software.

- 1** Make sure the product is **NOT CONNECTED** to your computer.



Windows®: If you see a Found New Hardware screen, click **Cancel** and disconnect the USB cable.

- 2** Insert the product CD (Windows only) or download and run your product's software package. For the latest software, visit www.epson.com.jm/support/L3110.
- 3** Follow the instructions on the computer screen to run the setup program.

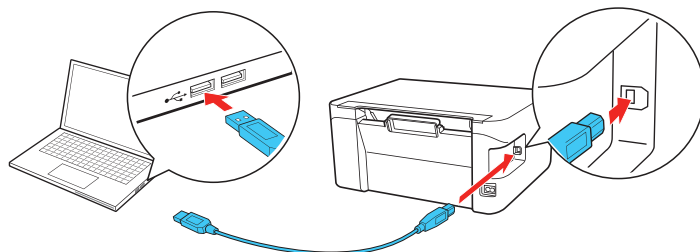
Any problems?

There are lines or incorrect colors in my printouts.

Run a nozzle check to see if there are any clogged nozzles. Then clean the print head, if necessary. See the online *User's Guide* for more information.

Setup is unable to find my product after connecting it with a USB cable.










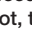



Make sure your product is on and securely connected as shown:



Error indicators

If you see one of the error indicators below, follow the steps here to proceed:

 **Flashing**  **On**

 	Initial ink charging may not be complete. Be sure to complete the steps in the "Fill ink tanks" and "Turn on and charge the ink" sections.
 	Paper is jammed. Remove any jammed paper from inside the product or from the rear paper feed slot. Make sure your paper is loaded correctly, then press  or  .
 	Paper is out or multiple pages have fed into the rear paper feed slot. Load paper correctly in the rear paper feed slot, then press  or  .
  	Printer error. Turn off the product and check that no paper or other foreign object is inside the product.

Any questions?

User's Guide

Windows: Click the icon on your desktop or Apps screen to access the online *User's Guide*.

Mac: Click the icon in **Applications/Epson Software/Guide** to access the online *User's Guide*.

If you don't have a User's Guide icon, go to the Epson website, as described in the next column.

Technical support

Visit www.epson.com.jm/support/L3110 to download drivers, view manuals, get FAQs, or contact Epson.

You can also speak to a service technician by calling one of these numbers:

Argentina	(54 11) 5167-0300	Guatemala*	1-800-835-0358
	0800-288-37766	Mexico	01-800-087-1080
Bolivia*	800-100-116	Mexico City	(52 55) 1323-2052
Chile	(56 2) 2484-3400	Nicaragua*	00-1-800-226-0368
Colombia	018000-915235	Panama*	00-800-052-1376
Bogota	(57 1) 523-5000	Paraguay	009-800-521-0019
Costa Rica	800-377-6627	Peru	0800-10126
Dominican Republic*	1-888-760-0068	Lima	(51 1) 418-0210
Ecuador*	1-800-000-044	Uruguay	00040-5210067
El Salvador*	800-6570	Venezuela	(58 212) 240-1111

* Contact your local phone company to call this toll-free number from a mobile phone.

If your country does not appear on the list, contact your nearest Epson sales office. Toll or long distance charges may apply.

Need paper and ink?





Ensure peak performance and brilliant results with Genuine Epson® Ink and specialty papers, engineered specifically for Epson printers. You can purchase them from an Epson authorized reseller. To find the nearest one, visit www.epson.com.jm or contact Epson as described in “Any questions?” on this sheet.



DESIGNED *for*
EXCELLENCE™

Epson printers, ink and specialty papers.

L3110 replacement inks

Color	Part number
 Black	544
 Cyan	544
 Magenta	544
 Yellow	544



EPSON is a registered trademark and EPSON Exceed Your Vision is a registered logomark of Seiko Epson Corporation.

Designed for Excellence is a trademark of Epson America, Inc.

Mac is a trademark of Apple Inc., registered in the U.S. and other countries.

General Notice: Other product names used herein are for identification purposes only and may be trademarks of their respective owners. Epson disclaims any and all rights in those marks.

This information is subject to change without notice.

© 2018 Epson America, Inc., 3/18

Printed in XXXXXX

CPD-55451